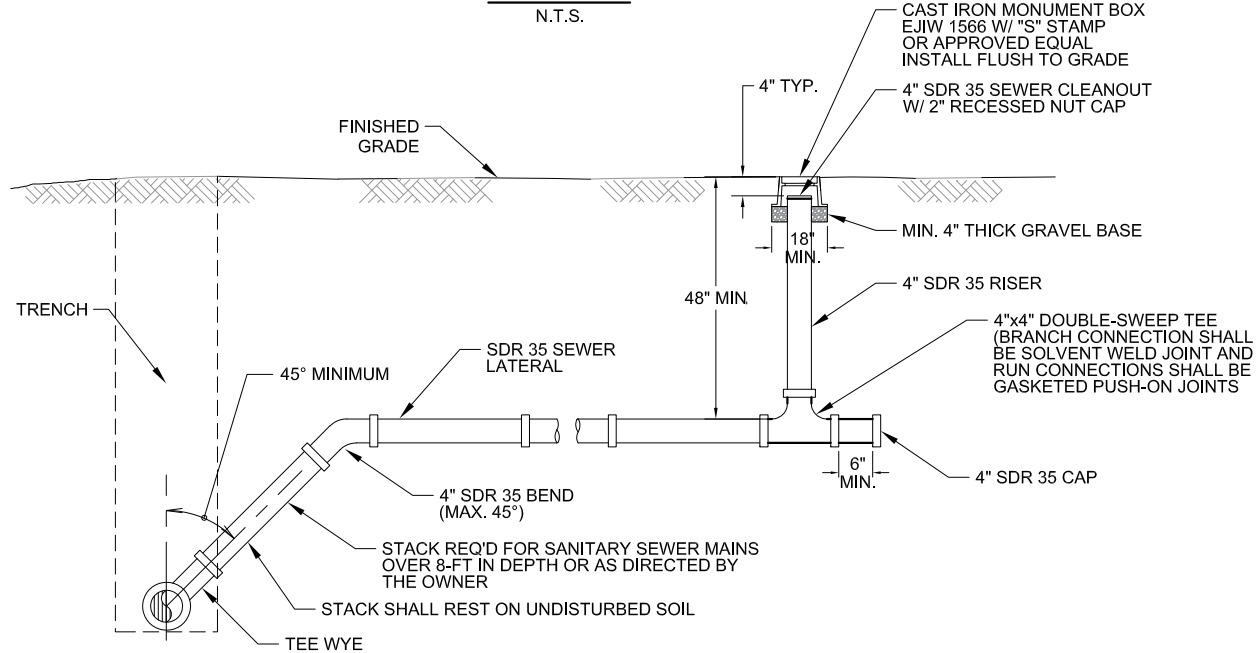


PLAN VIEW
N.T.S.



ELEVATION VIEW
N.T.S.

NOTES:

1. SANITARY SEWER LATERALS SHALL BE 4" SDR 35 UNLESS DIRECTED OTHERWISE BY THE OWNER.
2. DOUBLE SWEEP TEES SHALL HAVE SOLVENT WELD JOINTS FOR THE BRANCH CONNECTION AND GASKETED PUSH-ON JOINTS FOR THE RUN CONNECTIONS.
3. NON-SEIZE GREASE SUITABLE FOR USE WITH PVC FITTINGS SHALL BE APPLIED TO THE THREADS OF THE CLEANOUT CAP.
4. WHERE THE SANITARY SEWER MAIN IS PVC C900, THE TEE-WYE SHALL BE GASKETED C-900.
5. CLEANOUTS SHALL BE INSTALLED AS NEAR TO THE R/W, PROPERTY, OR EASEMENT LINE AS POSSIBLE. IF A CLEANOUT IS TO BE INSTALLED WHERE SIDEWALK IS EITHER EXISTING OR PROPOSED, IT SHALL BE PLACED BETWEEN THE SIDEWALK AND THE R/W LINE WHERE PRACTICAL. IF THE SIDEWALK IS INSTALLED AT THE R/W LINE, THE CLEANOUT SHALL BE PLACED BETWEEN THE SIDEWALK AND THE EDGE OF PAVEMENT IMMEDIATELY ADJACENT TO THE SIDEWALK. THE CLEANOUT SHALL NOT BE PLACED IN THE SIDEWALK OR A PAVED DRIVEWAY UNLESS APPROVED IN WRITING BY THE RIVIERA UTILITIES AND THE CITY OF FOLEY.
6. NO HORIZONTAL BENDS SHALL BE ALLOWED BETWEEN THE MAIN AND THE CLEANOUT UNLESS APPROVED IN WRITING BY RIVIERA UTILITIES AND THE CITY OF FOLEY. WHERE HORIZONTAL BENDS ARE ALLOWED, AN ADDITIONAL CLEANOUT SHALL BE INSTALLED AT EACH BEND.
7. PVC LATERALS SHALL BE MARKED WITH 14-GAUGE COATED COPPER WIRE BURIED 3 TO 6 INCHES ABOVE THE TOP OF THE PIPE IN ACCORDANCE WITH SECTION 400.07 OF RIVIERA UTILITIES' STANDARD SPECIFICATIONS. THE END OF THE LOCATE WIRE SHALL STUB-UP AT THE CLEANOUT INTO THE MONUMENT BOX.